

Rector Universitas Bina Darma
Prof. Dr. Sunda Ariana, M.Pd., M.M

I, Prof. Dr. Sunda Ariana, M.Pd., M.M., as the Rector of Bina Darma University, would like to extend a warm welcome to the entire academic community. I emphasize the university's commitment to providing quality education, developing students' potential, and fostering strong character. Bina Darma University continuously strives for growth and innovation to create an inspiring learning environment that supports soft skills development and prepares graduates who are professionally competent and socially responsible. All members of the academic community are encouraged to contribute to building a dynamic and harmonious academic atmosphere. May Allah always guide us and grant success in our educational journey.



Terakreditasi
UNGGUL



AFFORDABLE TUITION
PREMIUM QUALITY

600^K

#Installment Available
*Terms and Conditions Apply



SCAN ME



**Online
Registration :**

binadarma.ac.id/pendaftaran








CAMPUS
**CREATIVE &
INNOVATIVE**

FACILITIES SUPPORTING

Some Facilities at Universitas Bina Darma :

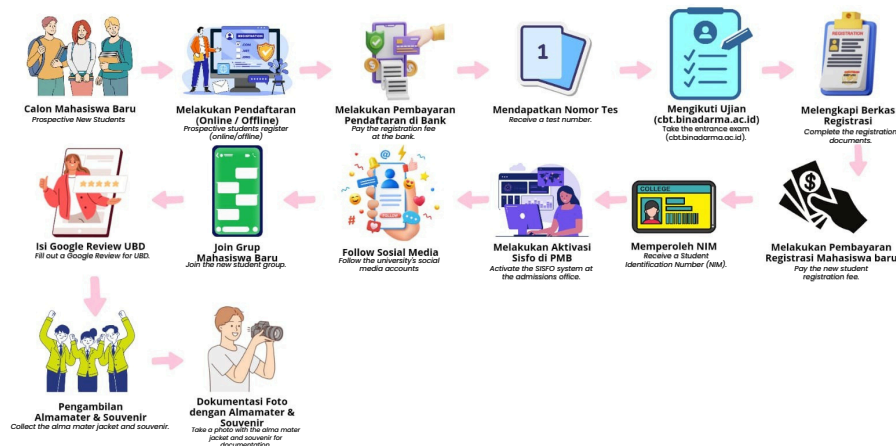
- ✓ Computer Labs (500+ Units)
- ✓ Full Internet Access
- ✓ Laboratory
- ✓ Sport Massage
- ✓ Sports Field
- ✓ Library
- ✓ Fully Air-Conditioned Classrooms
- ✓ Career Centre
- ✓ Language Centre
- ✓ Tax Centre
- ✓ Psychology Service Centre
- ✓ Stock Exchange Corner
- ✓ Professional Certification Institute (LSP)
- ✓ Business Incubator
- ✓ Student Dormitory

WHY SHOULD IT BE UNIVERSITAS BINA DARMA?

-  Affordable Fees
-  Best Private University in South Sumatra
-  Creative & Innovative
-  A-Accredited Library
-  Comprehensive Facilities
-  International Certification
-  UNGGUL Accreditation
-  Accredited Study Program

Alur Penerimaan Mahasiswa Baru Universitas Bina Darma

New Student Admission Process at Bina Darma University



FACULTY VOCATIONAL (D3)

D3 STUDY PROGRAMS

- ✓ Information Management
- ✓ Computer Engineering
- ✓ Business Administration

POSTGRADUATE PROGRAM (S2)

STUDY PROGRAMS

- ✓ Master of Management
- ✓ Master of Informatics Engineering
- ✓ Master of Communication Science
- ✓ Master of Civil Engineering
- ✓ Master of Physical Education

FACULTY SCIENCE TECHNOLOGY (S1)

STUDY PROGRAMS

- ✓ Information Systems **UNGGUL**
- ✓ Informatics Engineering
- ✓ Civil Engineering
- ✓ Electrical Engineering
- ✓ Industrial Engineering

FACULTY SOCIAL HUMANITIES (S1)

STUDY PROGRAMS

- ✓ Management
- ✓ Accounting
- ✓ Psychology
- ✓ Communication Science **UNGGUL**
- ✓ Indonesian Language Education
- ✓ Sports Education
- ✓ English Literature

REGISTER
NOW!



RPL PATHWAY – NON-RPL PATHWAY – INTERNATIONAL STUDENT PATHWAY